

AA265 Unitised Curtain Wall System  
(Curtain Wall System) Revit 2015 User Guide

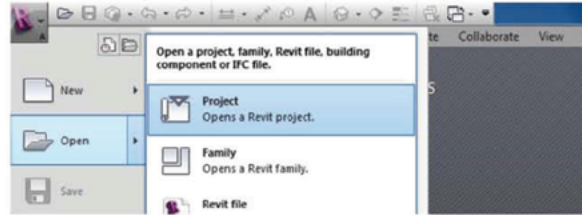


ARCHITECTURAL ALUMINIUM GLAZING SYSTEMS

## Loading the Kawneer Curtain Wall Systems into your project

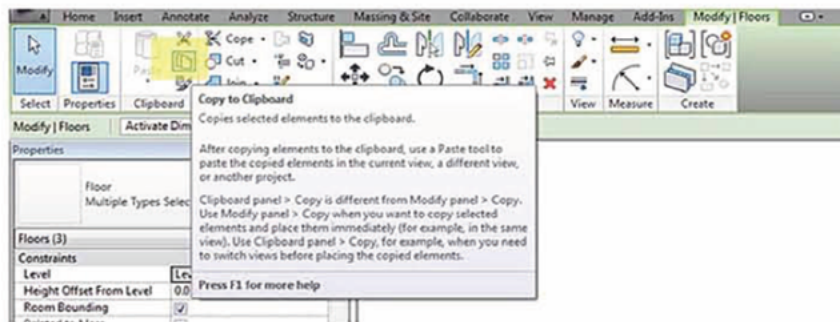
Curtain walls in Revit are classed as a system family. You can copy the curtain wall into your project using the following method;

1. Open your Revit project file (.rvt) and navigate to a floor plan view.



2. Now open the Kawneer Curtain Wall System project (.rvt) that you have downloaded from **bimstore**. The default view that opens will be a 'Product Overview' floor plan which illustrates all of the available systems from Kawneer for that particular range.
3. Select the Curtain Wall System you require to use in your own project. Hold Ctrl to select multiple types.
4. Now copy the component to the clipboard by selecting the button as per the image below on the 'Modify' tab or by using the shortcut (Ctrl+C)

*Please note only the items selected i.e. mullions, transoms, glazing panels etc will be copied and available to paste into your project model. Please ensure you have selected the whole curtain wall system.*



5. Now go to your project (plan view) and paste the element(s) into your project using the paste button on the 'Modify' tab or by using the shortcut (Ctrl+P)
6. The curtain wall system(s) are now copied and embedded into your project, they can be selected from the wall type selector within your project BIM. You can delete the item you pasted into your Revit model and the wall type will remain within your project. Unless there are no instances placed and the curtain wall type is purged out.

## Loading the Kawneer Material Library into your project

The Kawneer Curtain Wall System components contain manufacturer specific materials for use with the components. This has been provided as a Material Library File (.adsklib) including 25 standard and 31 metallic Kawneer Permacover paint finishes. The material library file is included in all Kawneer downloads from **bimstore**. To load the material library please use the following method;

1. Open your Revit project (.rvt) and go to the 'Manage' tab on the main ribbon.
2. Click the 'Materials' button. 
3. Once the material editor appears, in the bottom left hand corner click the  dropdown and select 'Open Existing Library' navigating to where you have saved your download from **bimstore** and select the Kawneer Material Library.

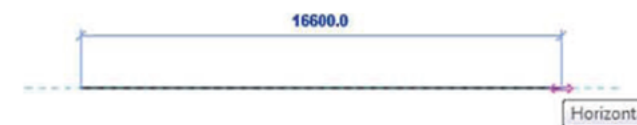
## Using the Kawneer Curtain Walling

This next section explains how to use the Kawneer curtain wall systems and the additional features that have been built into the components including various sizes and features the Kawneer systems offer.

All of the Kawneer curtain walling systems have been pre-configured to suit various styles available from Kawneer. For example the AA655 Unitised Curtain Wall System includes a default configuration include a square face cap and opening light.

In your Revit project, on the main Revit ribbon under the 'Architecture' tab, select the 'Wall' button. The Wall types property box will now appear on the left hand side of the screen. If you select the dropdown at the head of this all of the available curtain wall types in the project will be displayed. Select the one you require.

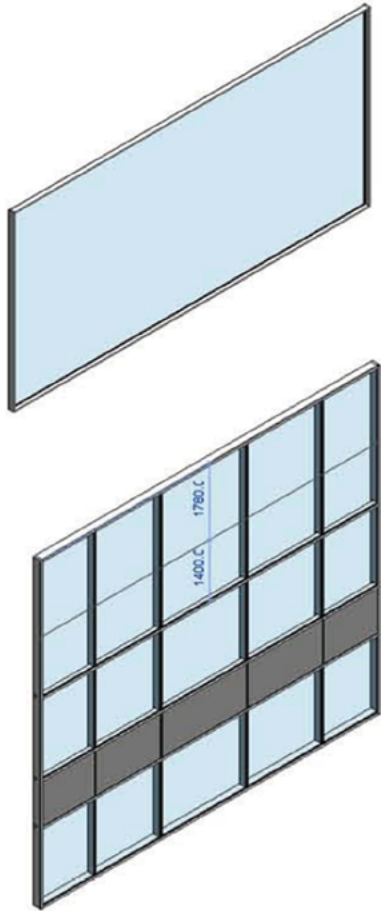
You can now draw your curtain wall system in plan view. You can type the exact dimension to make this more accurate. Click to complete the system.





## Using the Kawneer Curtain Walling continued .....

You now have a curtain wall in place that can be adjusted very quickly and easily to suit your design requirements. As you can see in the image the curtain wall is currently a single panel with perimeter transoms and mullions.

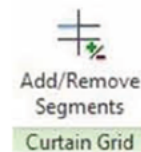



If your curtain wall is not square or rectangle in shape you can simply amend it by selecting the curtain wall and clicking the 'Edit Profile' button that appears on the main Revit ribbon. You can now adjust the overall shape of the curtain wall using the drawing tools.

To add additional intermediate transoms and mullions, click the 'Architecture' tab and under the build section click 'Curtain Grid'. Now when you hover over the curtain wall you will see a dotted line and dimensions appear. Simply click the button to insert a mullion or transom (depending on location). The correct mullions and transoms for the system have already been pre-configured for you.

If you wish to move the location of a mullion/transom hover over and tab through to select the centreline grid. With this selected dimensions will appear that can be adjusted to reposition accurately.

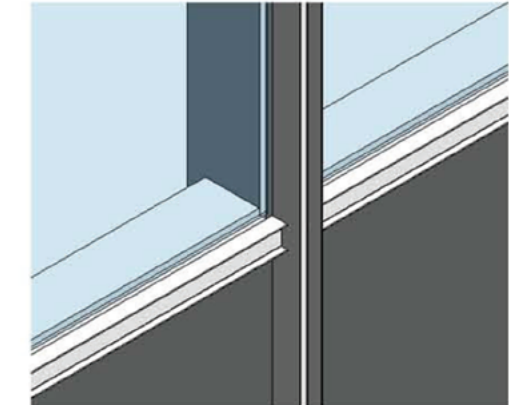
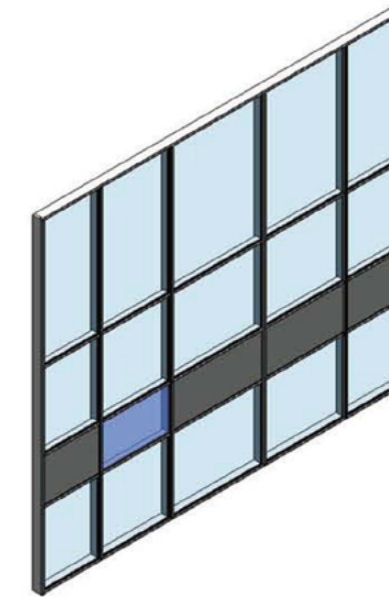
If your design requires you to remove particular sections of the mullion/transom this can also be easily done. Hover over the mullion/transom you wish to amend. Now tab through to select the centreline grid. With this selected the 'Add/Remove Segments' button will appear at the top of the Revit ribbon. Click this then click the sections of the mullion/transom you wish to remove/add.



If you require your mullion/transom to join in the opposite direction, you can simply zoom in to the area and select the mullion. The  icon will be displayed, click this button to amend the join.



All curtain wall systems are provided with 2 types of curtain wall panel - glazed (28mm double glazed) and solid panels. To amend a panel type simply tab through to highlight the panel and select it. If the panel is pinned, unpin it and select the alternative panel type from the properties drop down.

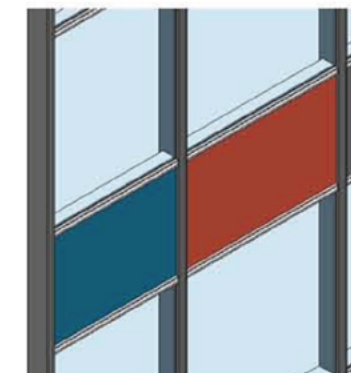
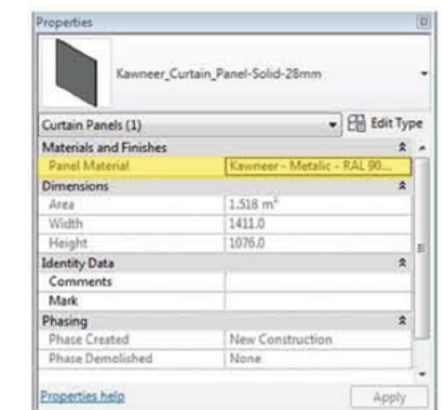


## Adjusting the Curtain Wall & Panel Material

The curtain wall framing and curtain wall panel materials can be adjusted to select one of the materials from the Kawneer Material Library (included in the download file). To do this please follow the steps below;

### To amend Curtain Wall Panel Material

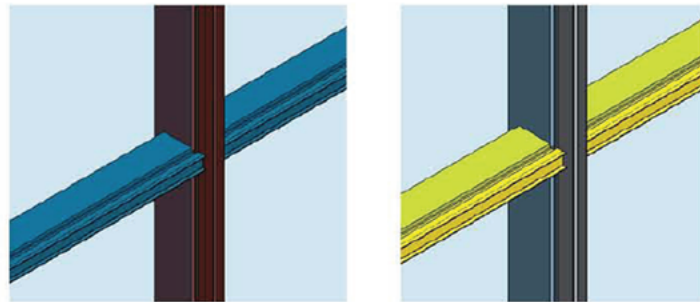
1. Select the curtain wall panel you wish to change.
2. On the 'Properties' dialogue box, which typically appears on the left hand side of the screen, scroll to the heading 'Materials and Finishes'
3. Under the parameter 'Glass Material' or 'Panel Material' click to the right hand side of the material to bring up the Material Editor.
4. Select your new material and click 'Apply'. Please refer to the earlier section of this user guide for instructions on how to load the Kawneer Material Library.



## Adjusting the Curtain Wall & Panel Material continued .....

### To amend Curtain Wall Mullion/Transom material

1. Select the curtain wall mullion or transom you wish to change.
2. On the 'Properties' dialogue box, which typically appears on the left hand side of the screen, click the 'Edit Type' button.
3. Once the dialogue box appears scroll to the heading 'Materials and Finishes'
4. Under the parameter 'Material' click to the right hand side of the material to bring up the Material Editor.
5. Select your new material and click 'Apply'. Please refer to the earlier section of this user guide for instructions on how to load the Kawneer Material Library.



## Kawneer Dual Colour System

Kawneer offer a Dual Colour System that allows the colour of the face cap to be different to that of the back box. **bimstore** have produced a unique system to allow this method to be used outside of the boundaries of the Revit Curtain Wall System.

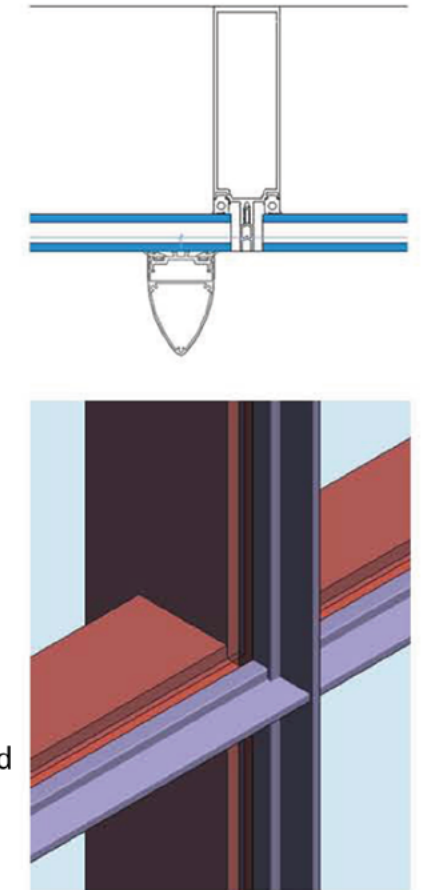
To use these components download a 'Dual Colour' version of the system from **bimstore** and use the following process;

1. Select a curtain wall frame (either Zone or Mullion drained depending on system selected). You will notice that the Dual Colour System is missing a face cap and has a flat face. This is essentially the back box build up and because of the way the software works it is not possible to select 2 materials for geometry that is created using a profile (closed loop shape)
2. Now use the same process as previously described to copy the curtain wall system (including all panels, mullions / transoms etc)
3. With the curtain walling now in your project set up your curtain wall design as required. As mentioned previously in this user guide.
4. Now you will need to set up your face caps. To allow the difference in colour from the main curtain wall mullion/transom these have been created as separate face based component which will recognise the flat face of the back box front.

5. Copy and Paste the face cap styles you require from the Kawneer System project.
6. Navigate to a 3D view. On the main Revit ribbon under the 'Architecture' tab choose 'Components'.
7. From the 'Properties' dialogue box choose the desired face cap style from the drop down.
8. Hover over the flat surface of the mullion/transom and the outline of the face cap will appear. Click the button to place the face cap. If you require the face cap can be rotated once placed. Alternatively use the space bar to rotate the face cap 90 degrees before clicking to place.

Note a clever tip for positioning the face cap in the correct position is to position it in plan view and use the 'Place on Vertical Face' placement to ensure you are dropping the face cap to the exact position. The 'Align' tool can also be used and will allow you to lock the face cap to the mullion or transom incase these are moved in future.

9. Set up all your required face caps and lock them to the mullions and transoms. You can use the copy multiple tool to do this very quickly. Go to an elevation view to pull and stretch the face caps to their desired length.
10. You can now select the face caps or the mullions / transoms and change the materials as already described in the user guide



## Making a new mullion / profile size

The Kawneer curtain wall systems contain a range of standard mullion sizes. These have been set up in the pre-configured projects as the most popular products offered by Kawneer. It is possible to make any size mullion profile by using the following method. However to avoid miss-specification please consult Kawneer to ensure any new size of profile can be manufactured.

Creating a new profile / mullion size is a two step process. Creating the required profile and then creating the required mullion detail.

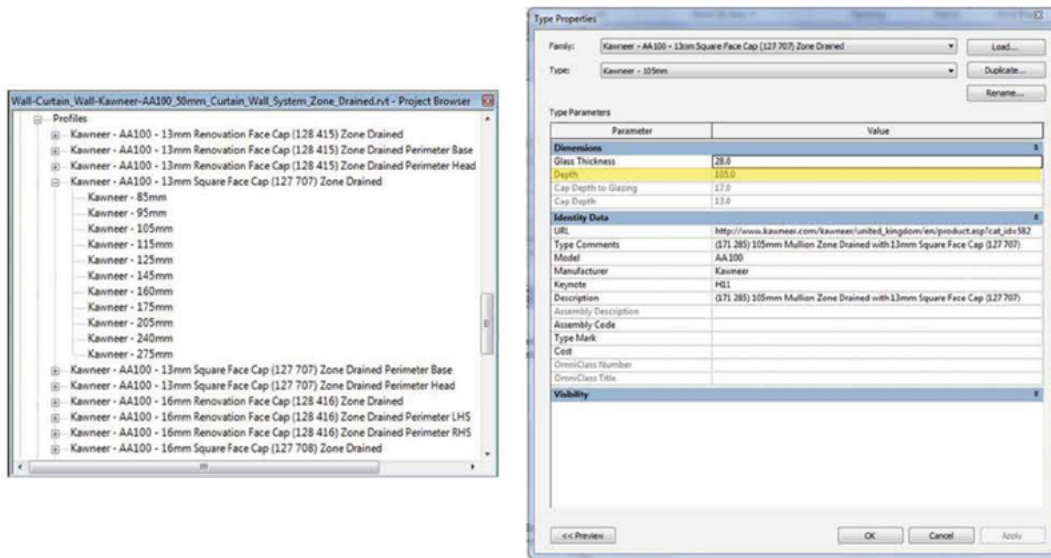
### Profile

1. In the project browser navigate to Families > Profiles
2. Select the type of mullion you require and expand the types to reveal all available sizes supplied by Kawneer.



## Making a new mullion / profile size continued .....

- To create your own profile size, right click any of the types, select 'duplicate' and rename the profile. (Please consult Kawneer to advise if the new size is possible)

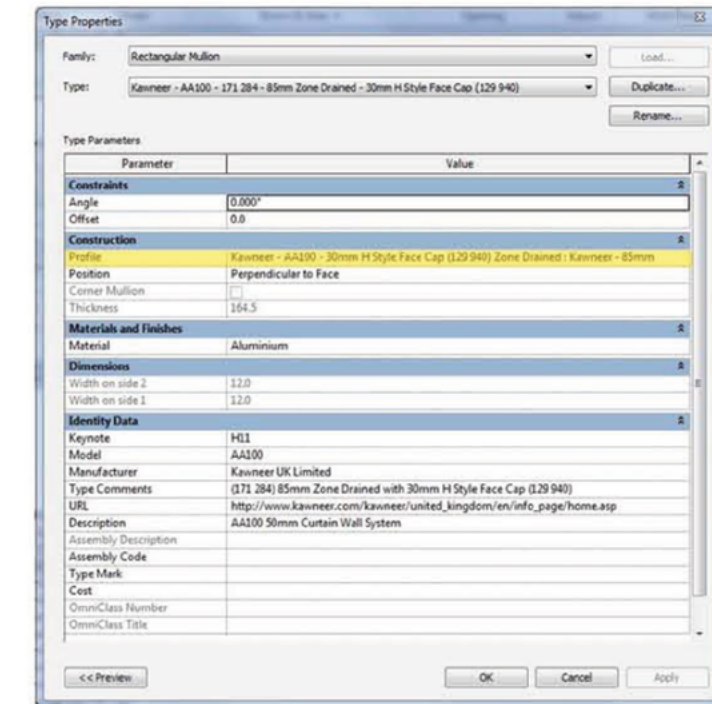


- Change the 'Depth' parameter to the new required dimension and click 'OK'.

Please note **bimstore** and Kawneer have created all of the available size of profile for you and advise that these types be used in your project to avoid miss-specification. Bespoke size may be available, please contact Kawneer for guidance.

### Mullion

- In the Project Browser navigate to Families > Curtain Wall Mullions > Rectangular Mullion.
- Expand the types and browse to a corresponding mullion type for the new size you require. You will need to consider 2 main points here;
  - The drainage type (Zone or Mullion Drained) depending on system
  - The Face Cap Type (e.g. Square, Bullnote etc) depending on system
- Right click and select 'duplicate', now rename the mullion accordingly.
- Double click on the new mullion type to open the 'Type Properties' box.
- Click on 'Profile' under the 'Construction' heading. From the dropdown choose your newly created profile type and click 'OK'.



- The new mullion type can now be selected to be used in the curtain wall system.

### Other Notes

You can add the Kawneer Curtain Wall components to your company template file. They will then be available without loading at the start of a project.

### Revisions

Version 1.0 - First Issue  
Version 1.1 - Branding update



Kawneer UK Ltd  
Astmoor Road, Astmoor Industrial Estate  
Runcorn, Cheshire WA7 1QQ, United Kingdom  
Tel: +44 (0) 1928 502500 Fax: +44 (0) 1928 502501

London Office  
12 Berwick Street  
Soho  
London W1F 0PN  
Tel: +44 (0) 207 287 5911

Email: [kuk.kawneer@arconic.com](mailto:kuk.kawneer@arconic.com)  
[www.kawneer.co.uk](http://www.kawneer.co.uk)

---

Other brochures available on request from Kawneer are:

- Architectural Aluminium Systems Finishes
- Door Systems
- Framing Systems
- Curtain Wall Systems
- AA®130 Brise Soleil System  
Solar Shading for Reduced Solar Heat Gain
- Window Systems
- Door and Window Sliding Systems
- Residential Aluminium Glazing Systems
- Specialist Horizontal Sliding Window Solutions for your Healthcare Project
- Fire Resistant Systems
- The Architects Guide to Aluminium in Building
- Sustainability
- Maintenance and Cleaning



Kawneer's continuous development and engineering programmes may bring about product changes. Kawneer reserves the right to introduce without notice such changes which will not detract from the product's performance  
© KAWNEER UK LTD